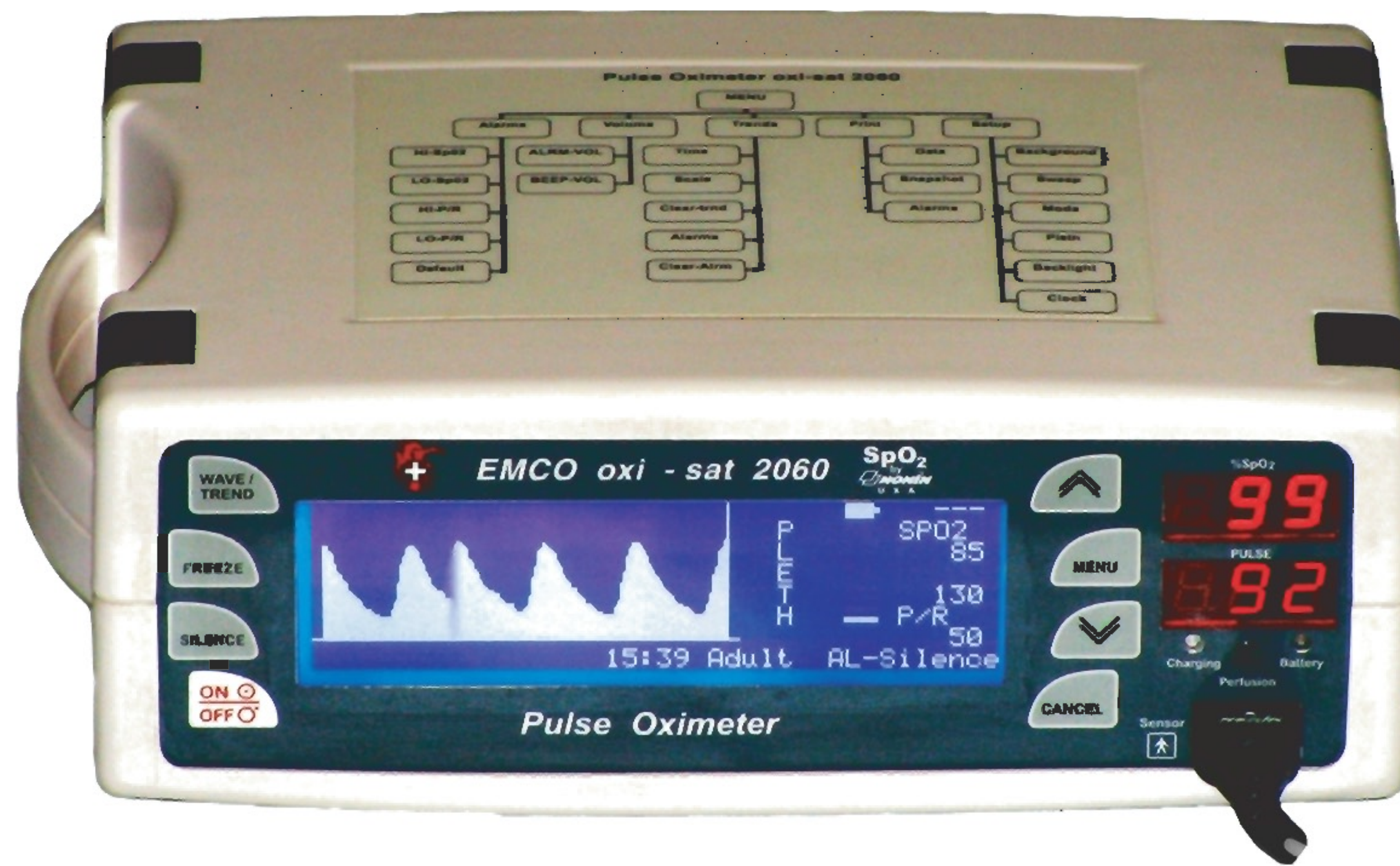


# TABLE TOP PULSE OXIMETER



## EMCO oxi-sat 2060 with Plethysmograph Waveform



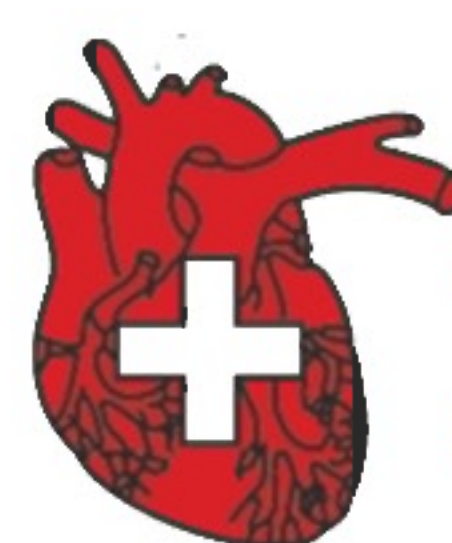
- Manufactured using patented **PureSat<sup>®</sup>** Oximeter technology from **Nonin Medical Inc., USA**
- Provides fast & reliable SpO<sub>2</sub> and Pulse rate measurements on any patient, from neonates to adults
- Bright, easy-to read LED displays indicate SpO<sub>2</sub> and Pulse rate measurements
- User Selectable High & Low Alarm limits for all parameters
- User Selectable Alarm & Pulse Beep Volume
- Plethysmograph waveform in 3 Wave speeds
- Ten segment bargraph indicates pulse strength
- Sensor Alarm indicates that the sensor has been disconnected either from patient or from oximeter
- Pulse Beep is sounded for every detected pulse, with the tone varying according to SpO<sub>2</sub> value
- Trends available for 72 hours with scrolling
- Waveform freeze with scrolling upto 60 secs.
- Adult & Neonate modes
- Power saving mode with Backlight timer and Off
- Reversible background - light & dark
- **3 colour Perfusion LED Status**- Green (good perfusion), Orange (marginal perfusion) & Red (inadequate perfusion)
- Built-In Rechargeable Battery back-up of 6 hours
- Audible & Visual Low battery indication when 15 minutes remaining
- Ideally suited for Operation Theatres, ICU, Outpatient clinics, Emergency rooms, or during emergency or land transport (ambulance)
- Wide range of sensors available with most of the sensors having 3 meter cable lengths

Emco Meditek, an ISO9001:2008 & ISO13485:2003 certified company, was formed in the year 1989 with the main objective of manufacturing and marketing of Electronic Medical Equipment. The equipment are designed and manufactured indigenously with the assistance of technology obtained from leading Medical Equipment manufacturing companies around the world especially USA, UK and Germany.

ISO 9001:2008



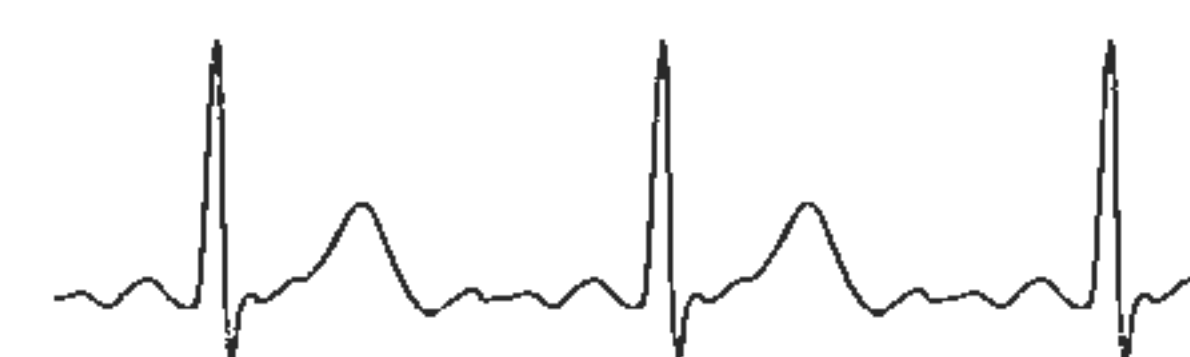
www.tuv.com  
ID 0910079221



At the heart  
of healthcare

### EMCO MEDITEK<sup>®</sup> PVT. LTD.

An ISO9001:2008 & ISO13485:2003 Certified Company







The EMCO oxi-sat 2060 is a complete Pulse Oximeter with Plethysmograph waveform. Incorporates all the features used in Oximetry. Indegenously designed and manufactured with technical assistance from world leaders in Oximetry, Nonin Medical Inc., USA using the Nonin PureSAT<sup>®</sup> Digital Signal Processing Technology

### Technical Specifications

#### Displays, Indicators & Keys

LED Display 0.4"	SpO <sub>2</sub> , Pulse Rate
LCD Display	240x64 pixels, Blue, STN, Transmissive, Negative, White LED Backlight, Viewing Area 132x33mm (5.2")
	Display of Plethysmograph, Bargraph, Alarm Limits
3 colour LED 5mm	Perfusion Status
Red LED 3mm	Battery
Green LED	Charging
Keys	On/Off, Menu, Up, Down, Cancel, Wave/Trend, Freeze, Silence

<b>SpO<sub>2</sub> Accuracy</b>	70 - 100%		
		Adult/Paediatrics	Neonates
No Motion	Reusable Sensors	±2 digits	±3 digits
	Disposable Sensors	±3 digits	±4 digits
Motion	Reusable Sensors	±3 digits	±3 digits
Low Perfusion	Reusable Sensors	±3 digits	±3 digits
	Disposable Sensors	±3 digits	±3 digits
Range	0 to 100%		
Averaging	4, 8, 16 beat - automatic		
Sensors	Adult Finger, Paediatric Finger, Universal "Y" & Silicon Wrap Sensor (All 3 meter cables)		

<b>Pulse Rate Accuracy</b>	18 to 300 bpm (No motion)		
	40 to 240 bpm (Motion/Low Perfusion)		
		Adult/Paediatrics	Neonates
No Motion	Reusable Sensors	±3 digits	±3 digits
	Disposable Sensors	±3 digits	±3 digits
Motion	Reusable Sensors	±5 digits	±5 digits
Low Perfusion	Reusable Sensors	±3 digits	±3 digits
	Disposable Sensors	±3 digits	±3 digits
Range	18 to 300 bpm		
Averaging	8, 16, 32 beat - automatic		

<b>Plethysmograph</b>	
Wave Speed	12.5, 25, 50 mm/sec (1.5, 3, 6 sec.)
Display type	Line or Fill
Gain	Automatic Gain Control
Wave Freeze	Scrolling available for 15 – 60 sec

<b>Pulse Beep</b>	
Pulse Beep	Tone changes with SpO <sub>2</sub> value
Alarm & Beep Volume	User selectable in steps of 1 to 10

<b>Alarms</b>	Sensor Disconnected, Limit Violations, Low Battery
---------------	--

<b>Silence</b>	2 min Silence, Alarm Silence, Beep Silence, All Silence	
----------------	---	--

<b>Alarm Ranges</b>	High	Low
SpO <sub>2</sub>	1 to 100% & OFF	0 to 100% (in 1% steps)
Pulse	5 to 300 bpm	0 to 295 bpm (in 5 bpm steps)

<b>Memory Trends</b>	(available on Display & Printing) Past Trends of SpO <sub>2</sub> & Pulse Rate Strength for 72 hours (3 days)
----------------------	---

<b>Trends available on Display</b>	15min, 1hr, 2hrs, 4hrs, 8hr, 24hrs (Default 4 hr Trend) Past Trends of 1000 Alarm Violations
------------------------------------	--

<b>Printing</b>	(available Optional Parallel Printer) Real Time (SpO <sub>2</sub> & Pulse, Min.SpO <sub>2</sub> ) at 1 min. intervals Past Trends of 72 hours (3 days) Snapshot of Plethysmograph (On Dot Matrix Printer)
-----------------	--

<b>Power Requirements</b>	
Battery	Rechargeable Built-in Sealed Lead Acid Battery - 6V, 1.2Ah
	Charging Time 8 hours
	Battery Backup 6 hours
AC Mains	230±15%Vac, 50 Hz

<b>Protection Against</b>	
Current Leakage	Defibrillation-proof type BF applied part
Electrical Shocks	Class II
Ingress	IPX1 (drip proof)

<b>Electrical Safety &amp; EMC Certificate</b>	IEC 60601-1, 60601-1-2, 60601-1-8, ISO 9919 ISO 9001:2008; ISO 13485:2003
--	--

<b>Mode of Operation</b>	Table top, continuous
--------------------------	-----------------------

<b>Dimensions</b>	Width	Height	Depth	Weight
	9.20"	3.15"	6.50"	2.0 kgs
	(234mm)	(80mm)	(165mm)	(4.4 lbs)

<b>Environmental Specifications</b>	
Operating Temp	0 to 45 deg. C
Storage Temp	-20 to 70 deg.C
Relative Humidity	10 to 90% Non-condensing (operating) 10 to 95% Non-condensing (storage)

Specifications subject to change without prior notice.



At the heart of healthcare

## EMCO MEDITEK<sup>®</sup> PVT. LTD.

**Factory :**  
Luna Road, Post Dabhasa,  
Taluka Padra, District Baroda - 391440, India  
Phone : +91-2662-223397 / 98  
Fax : +91-2662-223397  
E-mail : emcomeditek@gmail.com

**Head Office :**  
Unit No. 109, Vasani Udyog Bhavan,  
Off. Senapati Bapat Road, Lower Parel, Mumbai 400 013  
Phone : +91-22-24903653 ● Fax : +91-22-24970102  
E-mail : emmeditek@emcomeditek.com  
Website : http://www.emcomeditek.com  
CIN : U32109MH1989PTC053525